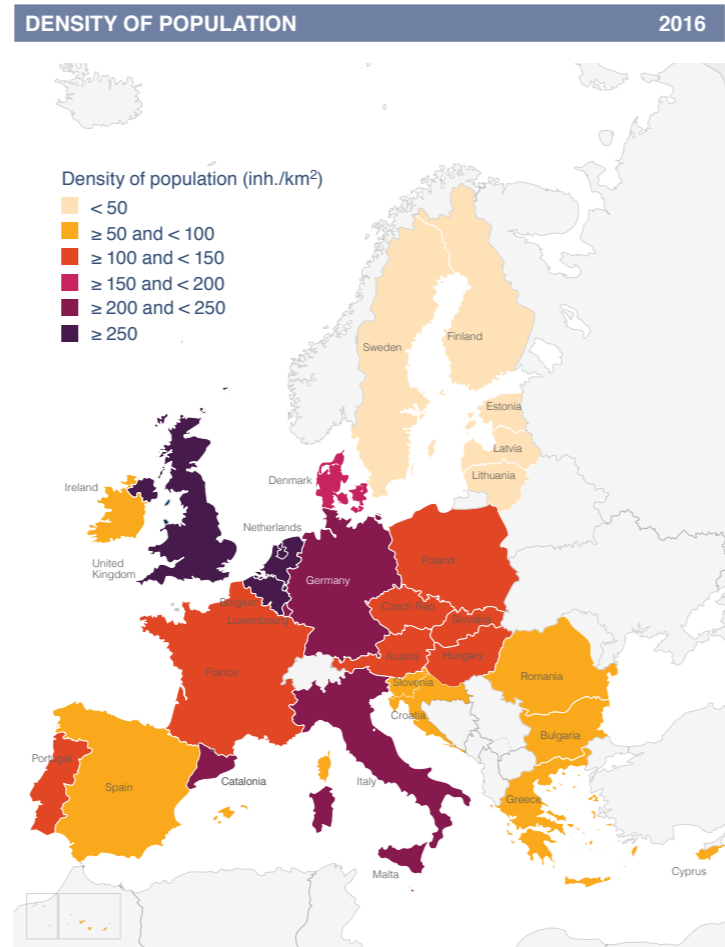
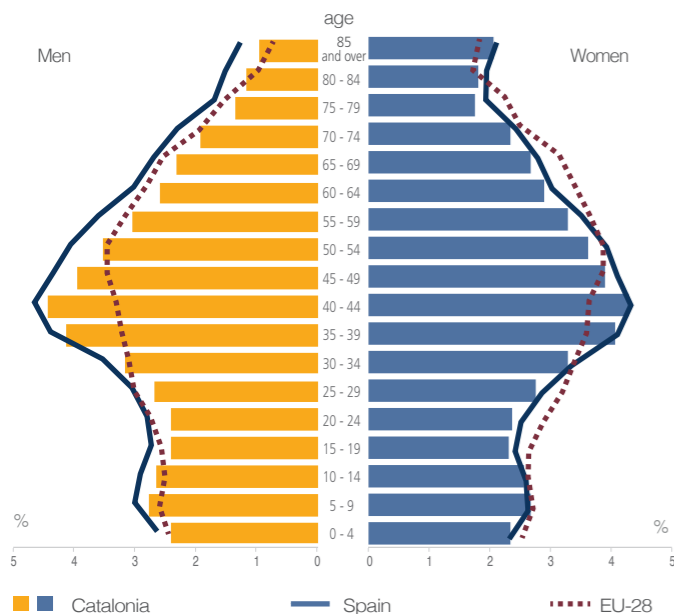


POPULATION		2017		
	Catalonia	Spain	EU-28	
Density (inh./km ²)	235.0	92.5 ⁽³⁾	117.5 ⁽³⁾	
Population (1,000) ⁽¹⁾	7 544	46 659	512 711	
men	49.0	49.1	48.9	
women	51.0	50.9	51.1	
0-14 years	15.7	15.1	15.6	
15-24 years	9.8	9.6	10.9	
25-49 years	36.2	36.3	33.8	
50-64 years	19.5	20.0	20.2	
65-79 years	12.7	12.8	14.0	
≥ 80 years	6.1	6.2	5.5	
Net migration ⁽²⁾	6.3	3.5	2.7	
Natural increase ⁽²⁾	0.1	-0.7	-0.4	
Total increase ⁽²⁾	6.3	2.8	2.3	
Birth rate ⁽²⁾	8.9	8.4	9.9	
Children per woman	1.36	1.34 ⁽³⁾	1.60 ⁽³⁾	
Marriage rate ⁽²⁾	3.9	3.7 ⁽³⁾	4.3 ⁽⁴⁾	
Divorce rate ⁽²⁾	2.3	2.1 ⁽³⁾	1.9 ⁽⁴⁾	
Death rate ⁽²⁾	8.8	9.0	10.3	
Life expectancy (years) ⁽³⁾	83.6	83.5	81.0	
men	80.8	80.5	78.2	
women	86.3	86.3	83.6	

⁽¹⁾ 01/01/2018 (estimates). ⁽²⁾ Per 1,000 inhabitants. ⁽³⁾ 2016
⁽⁴⁾ 2015

POPULATION STRUCTURE 2017



EDUCATION		2016-2017 Academic year		
	Catalonia	Spain	EU-28	
Students (1,000)	1 596	10 161 ⁽¹⁾	104 064 ⁽²⁾	
pre-primary education (%)	18.9	17.8	15.8	
primary education (%)	30.7	29.8	25.9	
secondary education (%)	29.7	33.0	40.5	
tertiary education (%)	20.8	19.4	17.8	
Tertiary education. Students (1,000)	332	1 969 ⁽¹⁾	19 590 ⁽¹⁾	
art and humanities (%)	10.1	11.1	12.6	
social and legal science (%)	44.7	42.0	39.6	
science (%)	6.5	10.0	12.7	
health (%)	19.6	14.5	13.5	
engineering and architecture (%)	19.0	22.4	21.6	

⁽¹⁾ 2015-2016 Academic year ⁽²⁾ 2013-2014 Academic year (provisional).

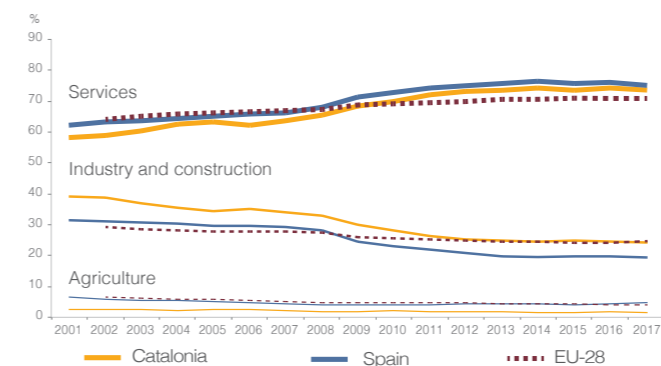
HEALTH		2017		
	Catalonia	Spain	EU-28	
Hospital beds (per 1,000 inhabitants)	4.7	3.0 ⁽¹⁾	5.1 ⁽²⁾	
Infant mortality rate (per 1,000 live births)	2.4	2.7 ⁽¹⁾	3.6 ⁽¹⁾	
Main causes of death (per 100,000 inhabitants)				
circulatory system	226.2 ⁽¹⁾	265.7 ⁽²⁾	375.9 ⁽²⁾	
malignant neoplasms	224.7 ⁽¹⁾	230.6 ⁽²⁾	259.5 ⁽²⁾	
transport accidents	3.7 ⁽¹⁾	4.5 ⁽²⁾	5.8 ⁽²⁾	

⁽¹⁾ 2016 ⁽²⁾ 2015

LABOUR MARKET		2017		
	Catalonia	Spain	EU-28	
Active population (1,000) ⁽¹⁾	3 751	22 558	239 938	
Activity rate (%) ⁽¹⁾	77.3	73.9	73.4	
men	81.1	78.9	78.9	
women	73.5	68.8	67.9	
Employment (1,000) ⁽¹⁾	3 245	18 649	221 421	
agriculture (%)	1.7	4.3	3.9	
industry and construction (%)	24.5	20.1	24.2	
services (%)	73.9	75.5	71.2	
Unemployment rate (%)	13.4	17.2	7.6	
men	12.5	15.7	7.4	
women	14.4	19.0	7.9	
< 25 year old	30.4	38.6	16.8	

⁽¹⁾ Calculated from the population aged 15 to 64.

EMPLOYED PERSONS BY SECTORS

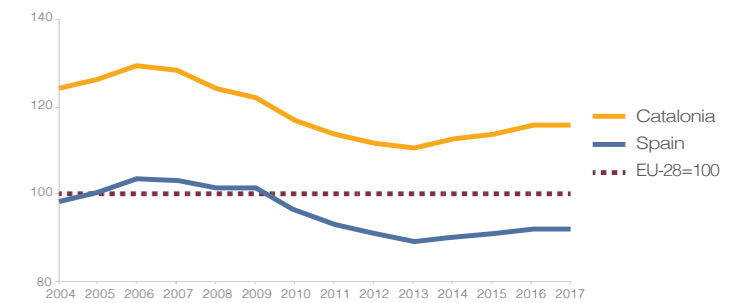


LIVING CONDITIONS		2017		
	Catalonia	Spain	EU-28	
Gender pay gap (%) ⁽¹⁾	13.9	14.2	16.5	
Inequality of income distribution ⁽²⁾	5.7	6.6	5.1	
At-risk-of-poverty rate before social transfers (%)	24.8	28.4	25.0	
men	23.9	28.0	24.3	
women	25.6	28.7	25.5	

⁽¹⁾ 2015 ⁽²⁾ Income inequality among the highest and lowest quintiles.

MAIN AGGREGATES		2017		
	Catalonia	Spain	EU-28	
Gross domestic product (million €)	234 651	1 166 319	15 377 371	
GDP. Growth rate (%)	3.4	3.0	2.4	
GDP per inhabitant (€)	31 223	25 100	30 000	
Gross value added (million €)	215 252	1 057 467	13 746 069	
agriculture (%)	1.0	3.0	1.7	
industry (%)	21.4	18.0	19.7	
construction (%)	4.8	6.1	5.4	
services (%)	72.7	72.9	73.3	

GDP PER INHABITANT (Purchasing power parity)



FOREIGN INVESTMENT AND TRADE 2017

	Catalonia	Spain	EU-28
External trade (million €)			
imports	85 168	311 651	1 856 864
exports	69 669	283 095	1 879 034

PRICES 2017

	Catalonia	Spain	EU-28
ICP. Annual variation (%)	2.2	2.0	1.7

RESEARCH · TECHNOLOGY 2018

	Catalonia	Spain	EU-28
R&D expenditure (million €) ⁽¹⁾	3 103	13 260	305 521
enterprises (%)	57.8	54.0	66.0
higher education sector (%)	22.8	27.5	22.8
government sector (%)	19.3	18.5	11.2
R&D researchers ⁽¹⁾⁽²⁾	27 544	126 633	1 886 221
Internet. Households with access (%)	88	86	89
Internet. Regular users (%) ⁽³⁾	85	83	83
men	86	83	84
women	85	82	82
Individuals who have purchased by Internet (%)	49	43	50
Enterprises have sold via e-commerce (%) ⁽⁴⁾	23	19	17

⁽¹⁾ 2016 ⁽²⁾ In full-time equivalent.
⁽³⁾ Population aged 16 to 74 who access at least once a week.
⁽⁴⁾ Companies with 10 or more employees.

AGRICULTURE · LIVESTOCK · FISHERIES			
	2017		
	Catalonia	Spain	EU-28
Agricultural final output (million €)	4 690	49 387	416 249
crop (%)	32.9	60.9	52.6
animal (%)	64.5	38.1	42.5
Gross value added (million €)	2 169	31 335	227 753

TRADE			
	2016		
	Catalonia	Spain	EU-28
Enterprises	137 616	796 049	6 316 410
wholesale (%)	33.8	28.9	28.8
retail (%)	57.3	61.1	57.5
motor vehicles (%)	8.9	10.0	13.8
Turnover (million €)	143 912	724 594	9 864 468
wholesale (%)	61.7	58.4	57.8
retail (%)	27.4	30.9	28.9
motor vehicles (%)	10.9	10.7	13.2

INDUSTRY · ENERGY			
	2017		
	Catalonia	Spain	EU-28
Industrial production index. Annual variation (%) ⁽¹⁾	4.0	3.2	3.1
Primary energy consumption (1,000 toe) ⁽²⁾⁽³⁾	23 198	116 681	1 607 754
coal (%)	0.1	9.8	16.7
oil and petroleum products (%)	44.4	42.1	34.3
natural gas (%)	21.5	20.3	21.4
nuclear energy (%)	25.9	12.7	14.1
renewable sources and others (%)	8.0	15.2	13.5
Final energy consumption (1,000 toe) ⁽²⁾⁽³⁾	12 991	79 225	1 061 668
industry (%)	27.3	25.3	25.8
transport (%)	42.3	40.4	33.2
domestic and others (%)	30.5	34.4	41.0
Energy consumption per inhabitant (toe/inhabitant) ⁽²⁾⁽³⁾	3.1	2.5	3.2

⁽¹⁾ Data adjusted by working days. ⁽²⁾ Tonnes of oil equivalent. ⁽³⁾ 2014

TRANSPORTS			
	2017		
	Catalonia	Spain	EU-28
Inland freight transport (tkm)			
road (%)	97.5	94.7 ⁽¹⁾	76.4 ⁽¹⁾
rail and waterway (%)	2.5	5.3 ⁽¹⁾	23.6 ⁽¹⁾
Airports			
transported passengers (1,000)	43 886	209 824	1 043 185

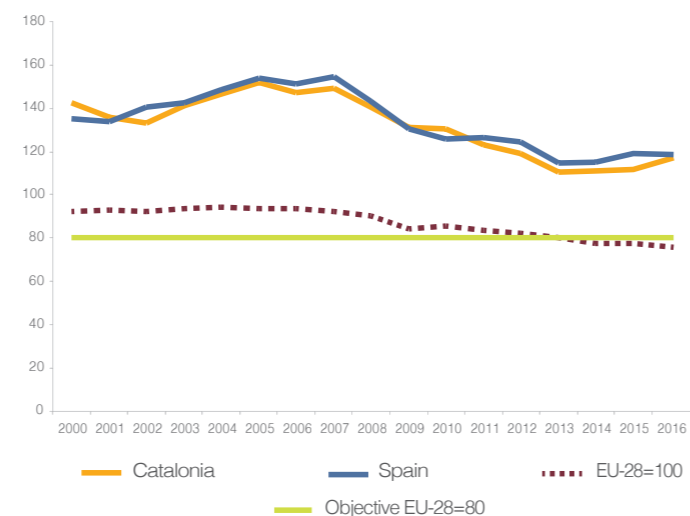
⁽¹⁾ 2016

TOURISM			
	2017		
	Catalonia	Spain	EU-28
Tourist establishments	6 677	50 518	656 318
hotels (%)	44.8	38.9	30.7
others (%)	55.2	61.1	69.3
Bed-places (1,000)	786	3 559	31 747
hotels (%)	43.3	53.9	43.8
others (%)	56.7	46.1	56.2
Nights spent (1,000)	83 049	471 200	3 184 056
hotels (%)	68.9	72.3	61.3
others (%)	31.1	27.7	38.7

ENVIRONMENT			
	2017		
	Catalonia	Spain	EU-28
Municipal waste. Generation (kg/inh./year)	509	462	483 ⁽¹⁾
kg per person per day	1.40	1.27	1.32
Municipal waste. By treatment method (kg/inh./year)			
landfilled	166	248	118 ⁽¹⁾
incineration	85	60	133 ⁽¹⁾
recycling	152	84	141 ⁽¹⁾
composting	51	71	78 ⁽¹⁾
Electricity generated from renewable sources ⁽¹⁾			
% of gross electricity consumption	16.4	36.6 ⁽¹⁾	29.6 ⁽¹⁾

⁽¹⁾ 2016

GREENHOUSE GAS EMISSIONS (Index base 1990=100)



idescat

Better statistics
for a better society

www.idescat.cat

CATALONIA IN EUROPE 2020

	Catalonia	Spain	EU-28
2017 Employment rate from 20 to 64 years of age (%)	71.8	65.5	72.2
men	76.4	71.5	78.0
women	67.2	59.6	66.5
2016 In-house R&D expenditure relative to the GDP (%)	1.46	1.19	2.04
2016 Greenhouse gas emissions Index (base 1990=100)	115.1	116.4	77.6
2016 Consumption of renewable energy. (% Share of gross final energy consumption)	8.2	17.3	17.0
2014 Primary energy consumption (million TOE)	20.3	112.6	1 508.3
2017 Early school leavers (%)	17.1	18.3	10.6
men	19.6	21.8	12.1
women	14.4	14.5	8.9
2017 Tertiary educational attainment by age group 30-34 (%)	44.8	41.2	39.9
men	38.8	34.8	34.9
women	50.6	47.5	44.9
2017 People at risk of poverty or social exclusion (%)	23.8	26.6	22.5
2017 People living in households with very low work intensity (%)	8.8	12.8	9.3
2017 People at risk of poverty after social transfers (%)	20.0	21.6	16.9
2017 Severely materially deprived people (%)	5.0	5.1	6.9

You will find the permanently updated data at:

www.idescat.cat/eu

Sources: Eurostat. Government of Catalonia, Idescat, INE and ministries.

Updated: 28/12/2018

© Generalitat de Catalunya
Institut d'Estadística de Catalunya
ISSN: 2014-8593

Figures of Catalonia

 **Generalitat de Catalunya**
Government of Catalonia